



EBNE ANALYSIS

Policy Committee Meeting

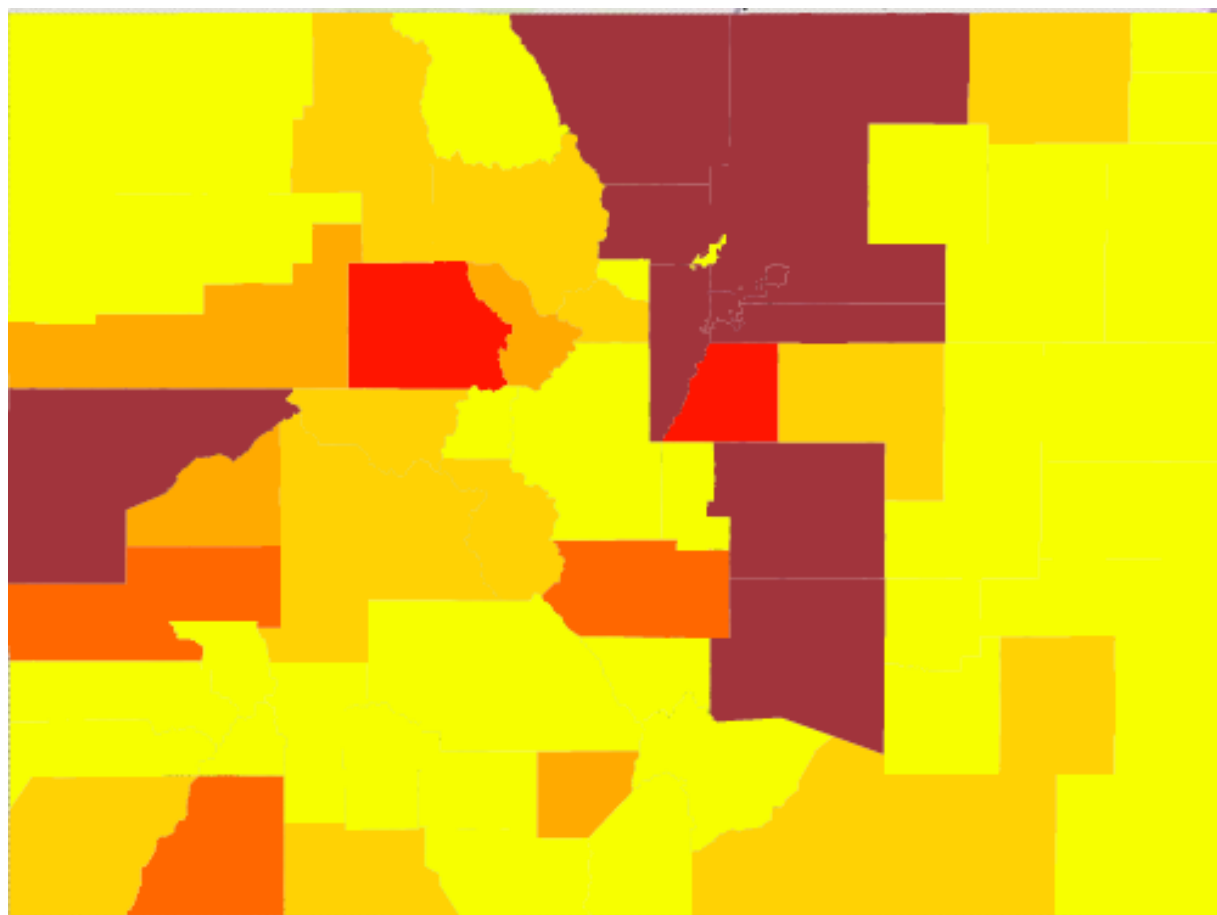
Saphia Elfituri, Public Affairs Manager

July 27, 2020

Overview

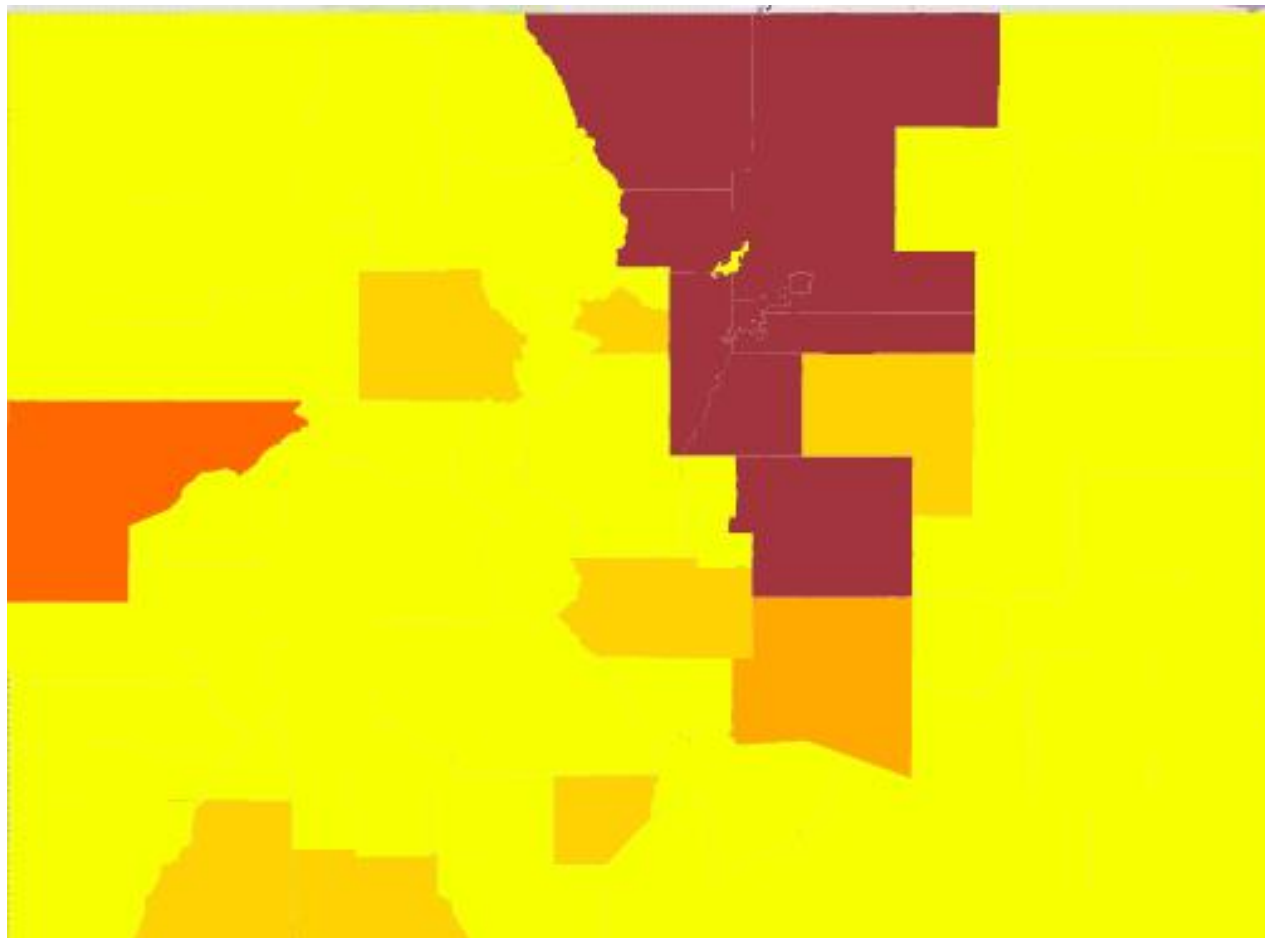
- The Colorado Health Institute conducted an analysis of the Eligible but Not Enrolled (EBNE) population by uninsured, off Exchange, on Exchange, and total individual market.
- The analysis includes a breakdown of EBNE by age, federal poverty level (FPL), primary language, and Citizenship status.
- In this context, EBNE is defined as eligible for tax credits, but not enrolled.

Uninsured EBNE by County



EBNE Count
<500
500 - 999
1,000-1,499
1,500 - 1,999
2,000 - 2,999
3,000 - 5,000

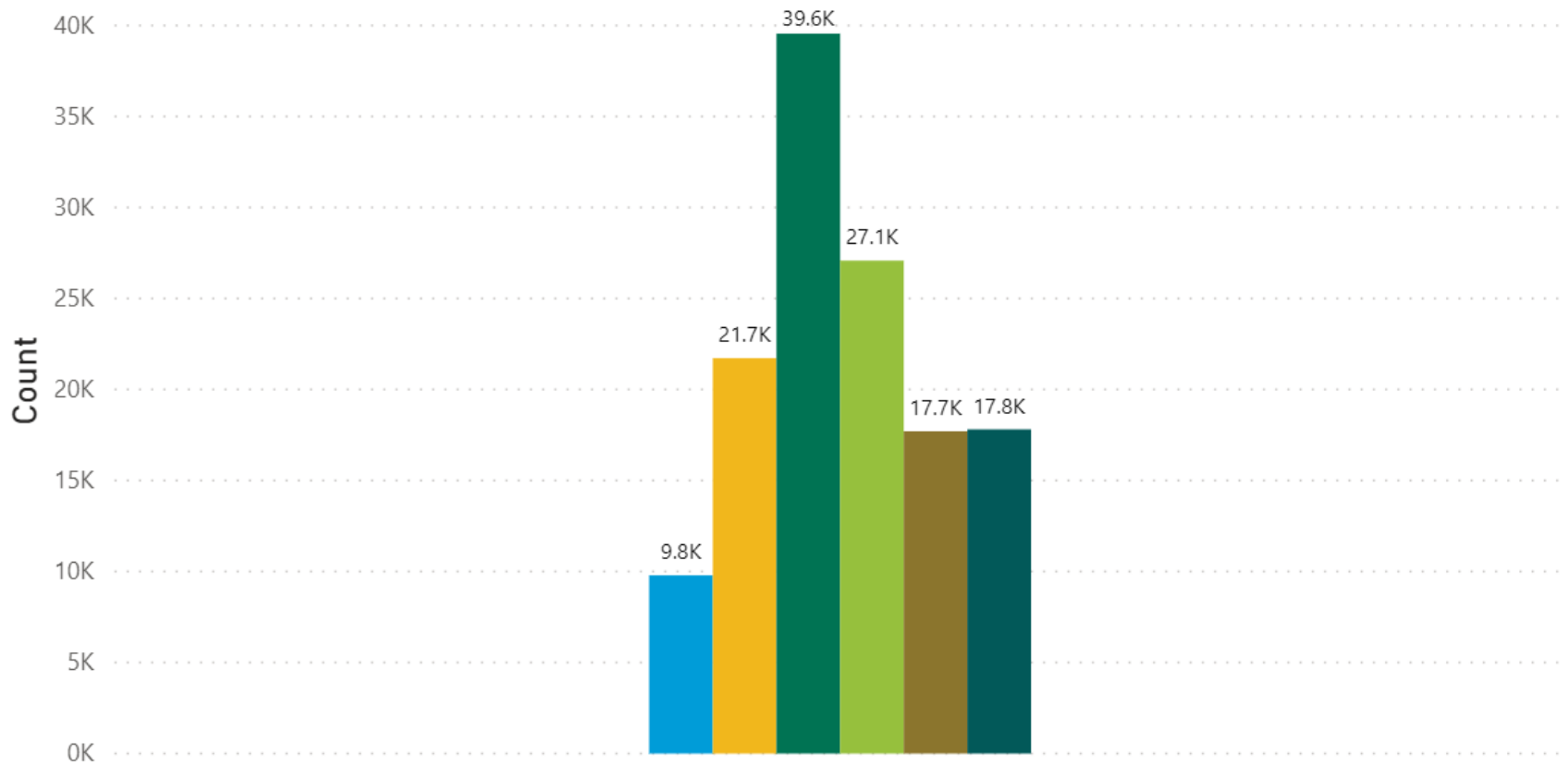
Off Exchange EBNE by County



EBNE Count
<500
500 - 999
1,000-1,499
1,500 - 1,999
2,000 - 2,999
3,000 - 5,000

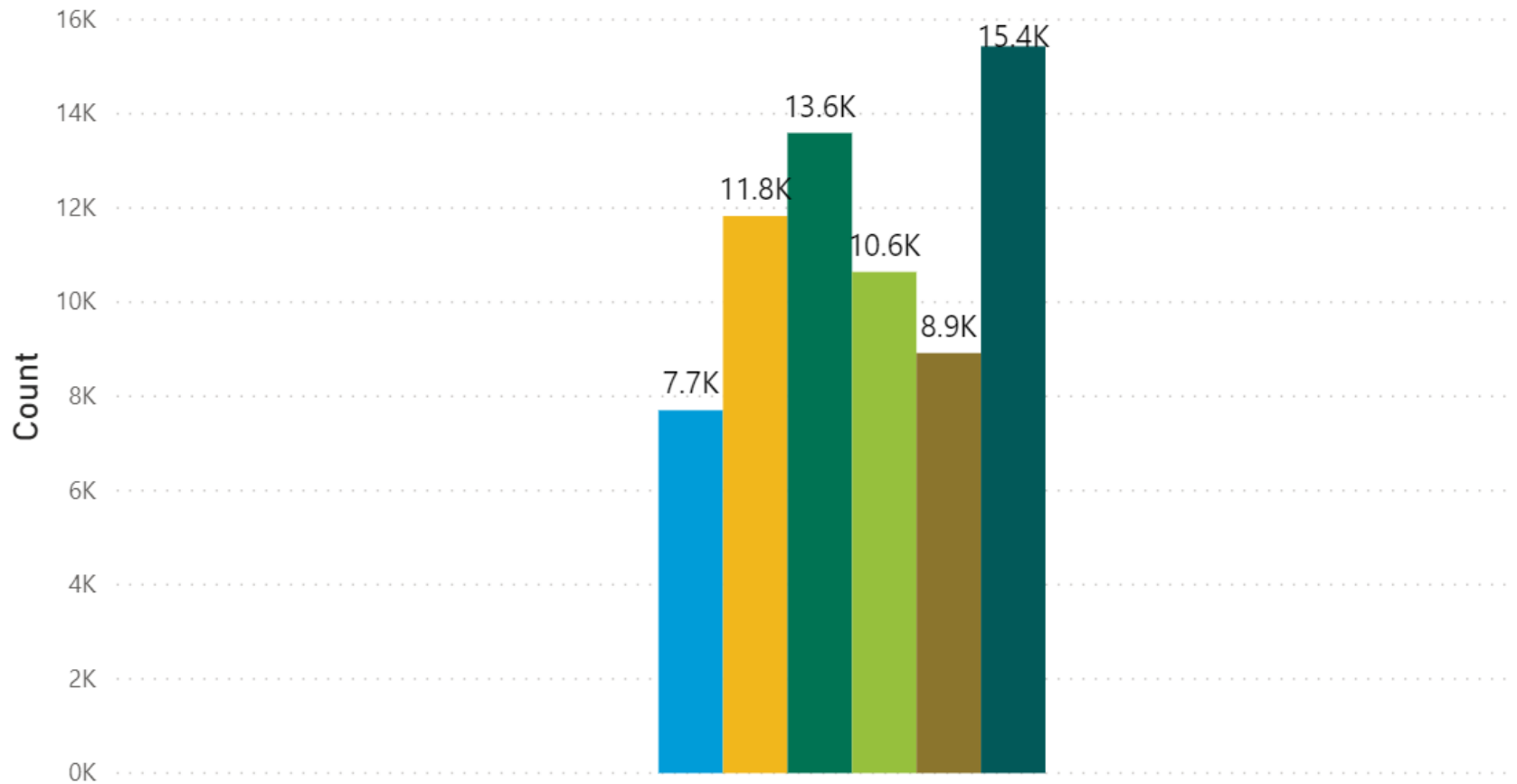
Uninsured EBNE by Age

● Ages 0-17 ● Ages 18-25 ● Ages 26-34 ● Ages 35-44 ● Ages 45-54 ● Ages 55-64

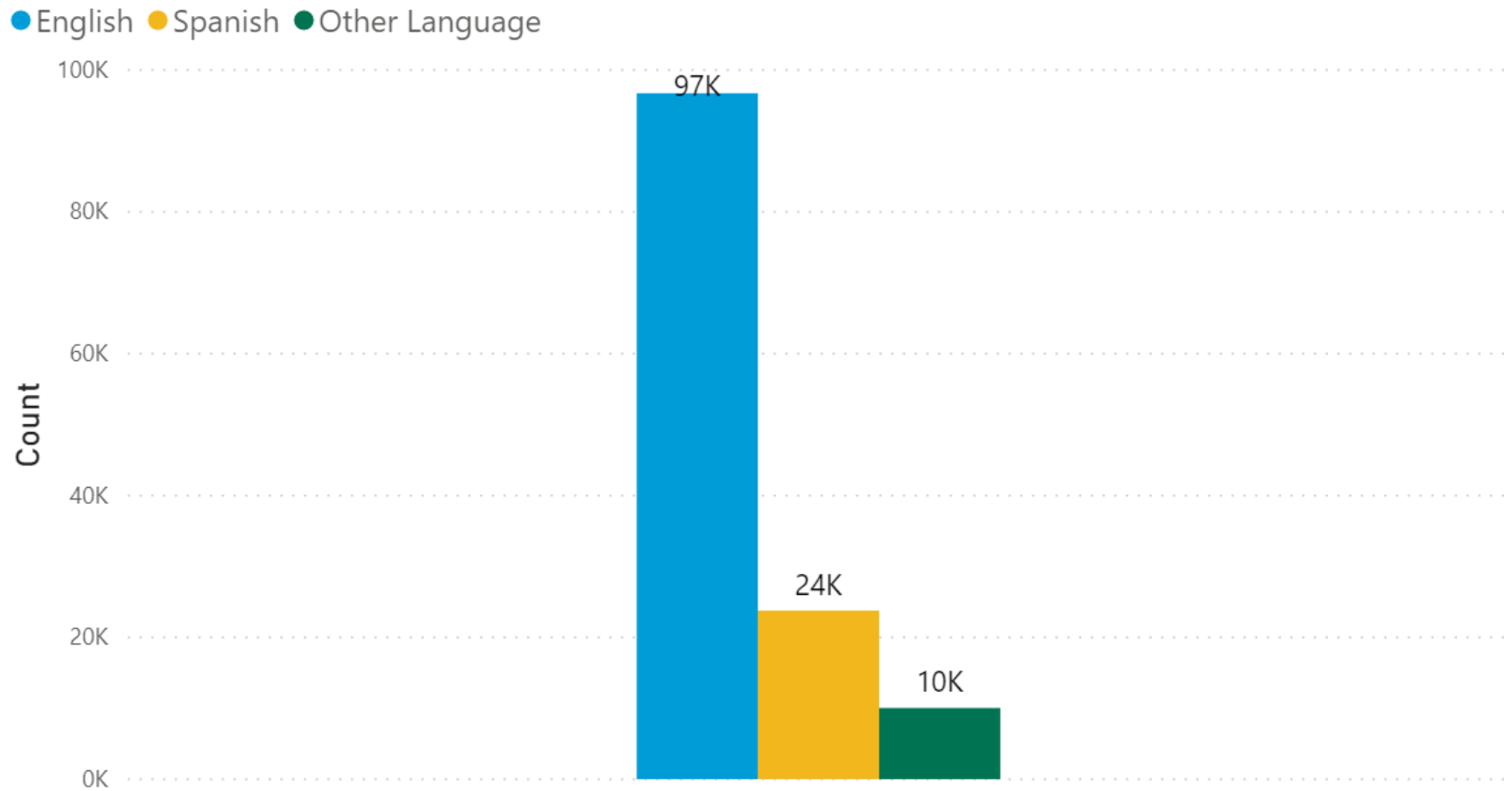


Off Exchange EBNE by Age

● Ages 0-17 ● Ages 18-25 ● Ages 26-34 ● Ages 35-44 ● Ages 45-54 ● Ages 55-64

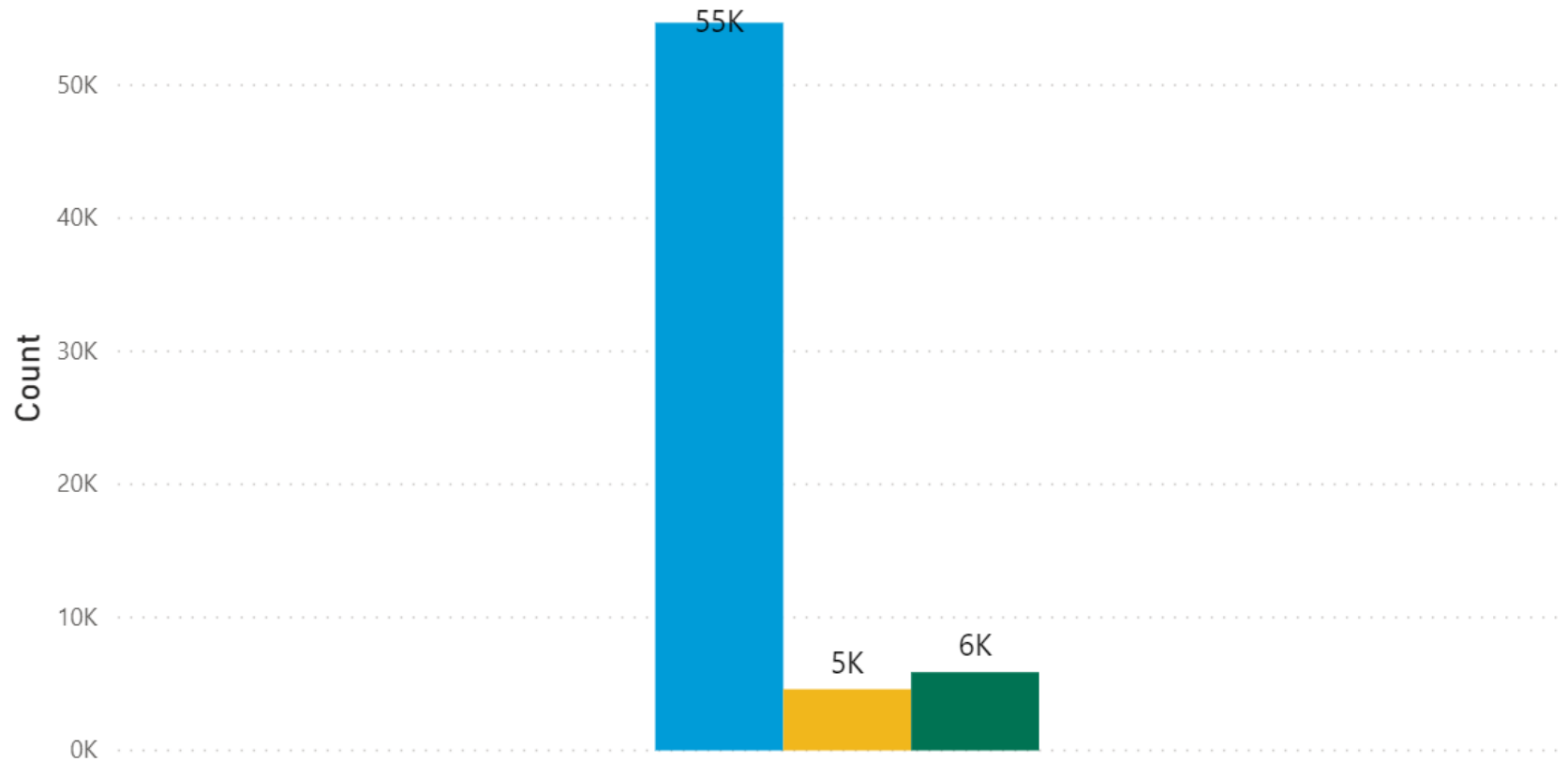


Uninsured EBNE by Primary Language



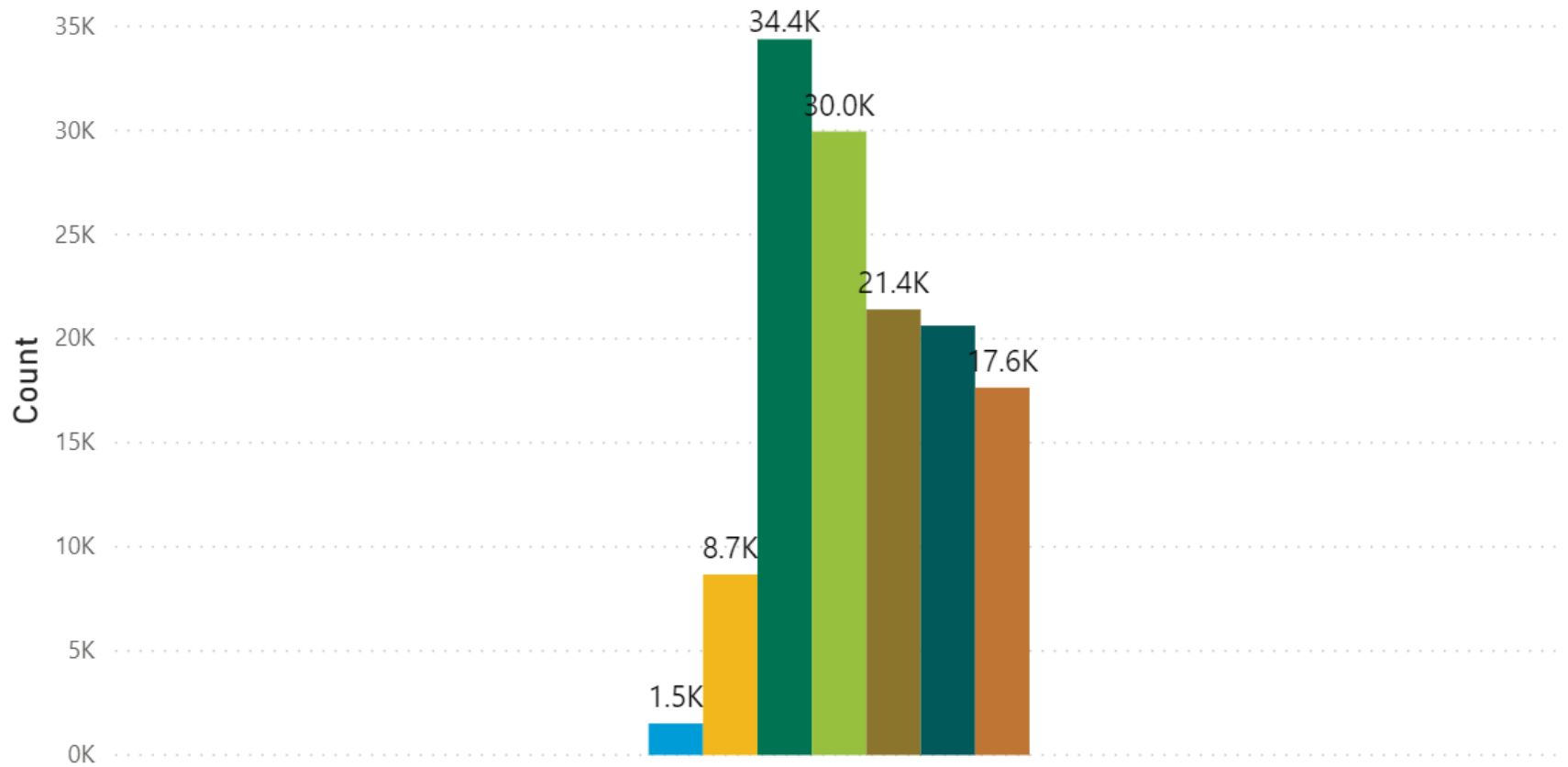
Off Exchange EBNE by Primary Language

● English ● Spanish ● Other Language



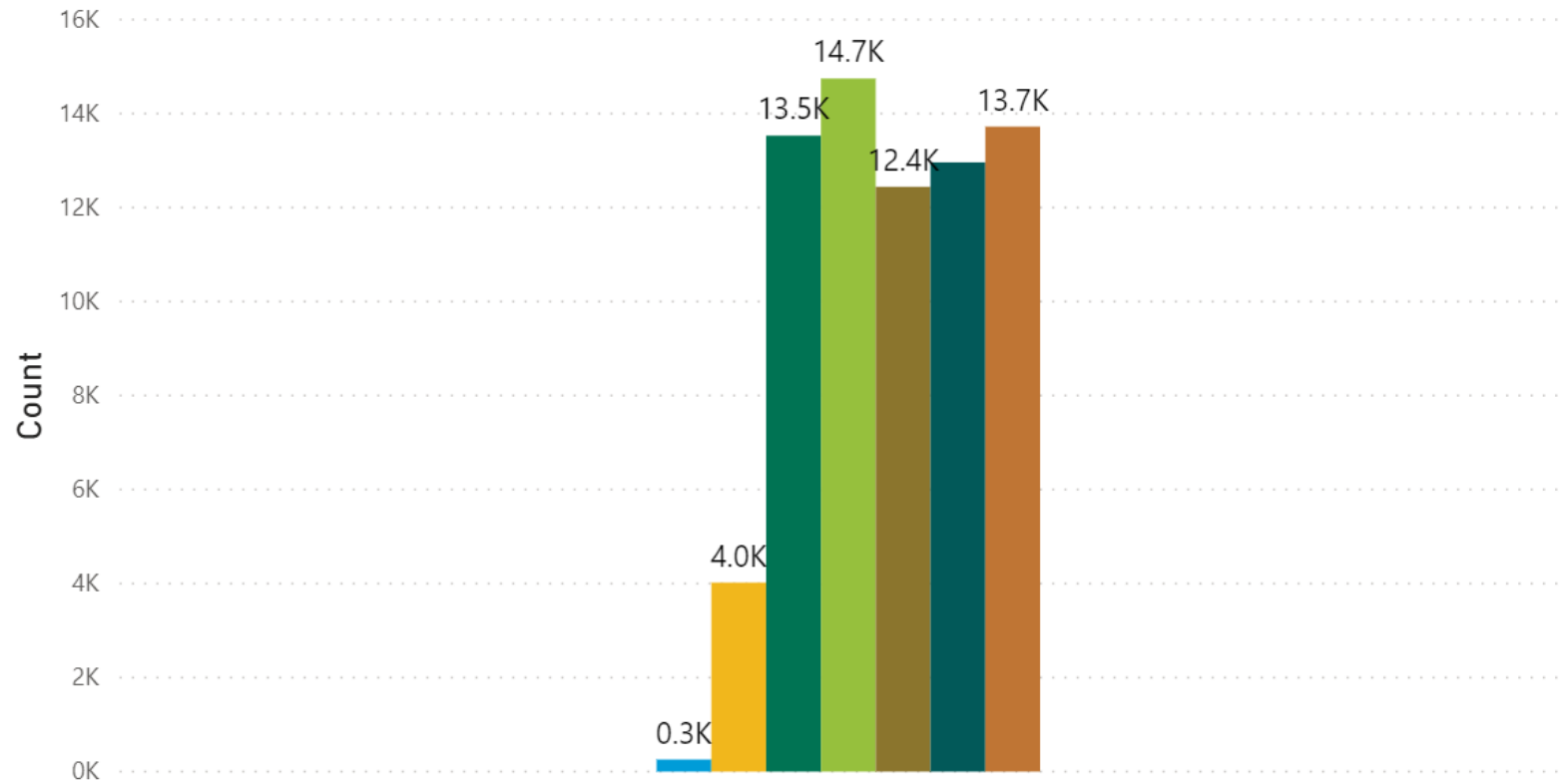
Uninsured EBNE by FPL

● 0-99% FPL ● 100-150% FPL ● 151-200% FPL ● 201-250% FPL ● 251-300% FPL ● 301-350% FPL ● 351-400% FPL



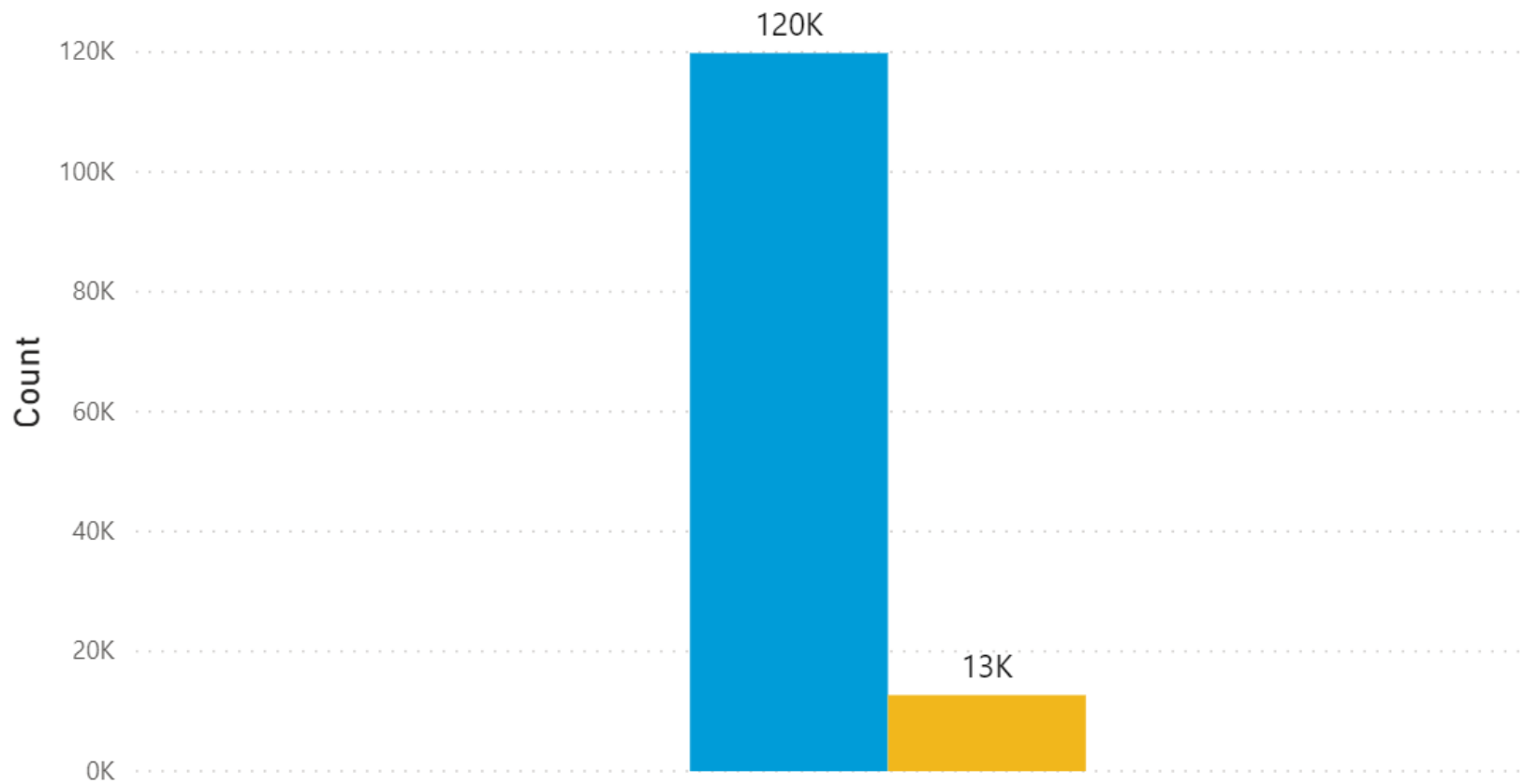
Off Exchange EBNE by FPL

● 0-99% FPL ● 100-150% FPL ● 151-200% FPL ● 201-250% FPL ● 251-300% FPL ● 301-350% FPL ● 351-400% FPL



Uninsured EBNE by Citizenship Status

● Citizen ● Non-Citizen



Off-Exchange EBNE by Citizenship Status

